

Sukkat Shalom



VERSE 1

♩ = 100

capo 4: G
B

Gsus4
Bsus4

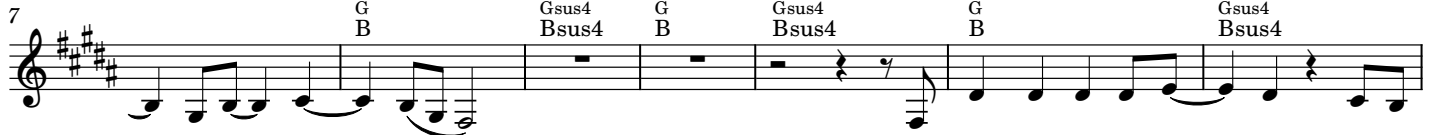
G
B

Gsus4
Bsus4

C
E



The stars a-bove me blink-ing, they must know just what I'm think ing: "It's so emp-ty and so cold



a-lone at night." The wind whips up a-round me and I'm



kind-a glad it's found me cause when it blows, I know I'll be all right.

PRE-CHORUS 1



A kiss from g?d with each lit-tle leaf that drops up-on my head



Oh, how small we all must feel when the sky be-comes our



blank-et and the ground be-low be-comes our bed But in this

CHORUS



Suk - kat Sha - lom Your love sur-rounds me, Suk-kat Sha - lom and it's



all a-round me. I know I'm safe and pro-tec ted in this world that is Your home



Your Suk - kat Sha - lom.

VERSE 2

57 $\begin{matrix} \text{Bsus4} \\ \text{Gsus4} \end{matrix}$ $\begin{matrix} \text{G} \\ \text{B} \end{matrix}$ $\begin{matrix} \text{Gsus4} \\ \text{Bsus4} \end{matrix}$ $\begin{matrix} \text{G} \\ \text{B} \end{matrix}$ $\begin{matrix} \text{Gsus4} \\ \text{Bsus4} \end{matrix}$

The sky is get-ting dim er, but I still can see a glim mer of a

62 $\begin{matrix} \text{C} \\ \text{E} \end{matrix}$ $\begin{matrix} \text{G} \\ \text{B} \end{matrix}$ $\begin{matrix} \text{Gsus4} \\ \text{Bsus4} \end{matrix}$ $\begin{matrix} \text{G} \\ \text{B} \end{matrix}$ $\begin{matrix} \text{Gsus4} \\ \text{Bsus4} \end{matrix}$

sliv - er of a moon to light my way. There

68 $\begin{matrix} \text{G} \\ \text{B} \end{matrix}$ $\begin{matrix} \text{Gsus4} \\ \text{Bsus4} \end{matrix}$ $\begin{matrix} \text{G} \\ \text{B} \end{matrix}$ $\begin{matrix} \text{Gsus4} \\ \text{Bsus4} \end{matrix}$

is no one be-side me and I have no map to guide me, but

72 $\begin{matrix} \text{C} \\ \text{E} \end{matrix}$ $\begin{matrix} \text{G} \\ \text{B} \end{matrix}$ $\begin{matrix} \text{Gsus4} \\ \text{Bsus4} \end{matrix}$ $\begin{matrix} \text{G} \\ \text{B} \end{matrix}$ $\begin{matrix} \text{Gsus4} \\ \text{Bsus4} \end{matrix}$

e - ven so I know I'll be o kay.

PRE-CHORUS 2

78 $\begin{matrix} \text{D} \\ \text{F\#} \end{matrix}$ $\begin{matrix} \text{C} \\ \text{E} \end{matrix}$ $\begin{matrix} \text{G} \\ \text{B} \end{matrix}$ $\begin{matrix} \text{Gsus4} \\ \text{Bsus4} \end{matrix}$ $\begin{matrix} \text{G} \\ \text{B} \end{matrix}$

The world seems sca-ry and con-fused each time it drifts in-to the dark. But I

86 $\begin{matrix} \text{Em} \\ \text{G\#m} \end{matrix}$ $\begin{matrix} \text{D} \\ \text{F\#} \end{matrix}$

know that You are there, Your light can fill the air, and

90 $\begin{matrix} \text{C} \\ \text{E} \end{matrix}$ $\begin{matrix} \text{D} \\ \text{F\#} \end{matrix}$ **go to CHORUS**

all it takes is just one spark. But in this

CODA

95 $\begin{matrix} \text{G} \\ \text{B} \end{matrix}$ $\begin{matrix} \text{Gsus4} \\ \text{Bsus4} \end{matrix}$ $\begin{matrix} \text{G} \\ \text{B} \end{matrix}$ $\begin{matrix} \text{D} \\ \text{F\#} \end{matrix}$ $\begin{matrix} \text{C} \\ \text{E} \end{matrix}$ $\begin{matrix} \text{G} \\ \text{B} \end{matrix}$ $\begin{matrix} \text{Gsus4} \\ \text{Bsus4} \end{matrix}$

Ba - ruch a - ta, Ha shem, ma - a - riv a - ra - vim.

105 $\begin{matrix} \text{G} \\ \text{B} \end{matrix}$ $\begin{matrix} \text{D} \\ \text{F\#} \end{matrix}$ $\begin{matrix} \text{C} \\ \text{E} \end{matrix}$ n.c.

Ba - ruch a - ta, Ha shem, ma - a - riv a - ra - vim.

Blessing from the evening liturgy:
We experience your blessing, Holy One, through noticing the evening becoming evening."

Transcribed by
M.D.May
Durham NC